

# Le marché du miel

XXI Congrès National de l'Apiculture

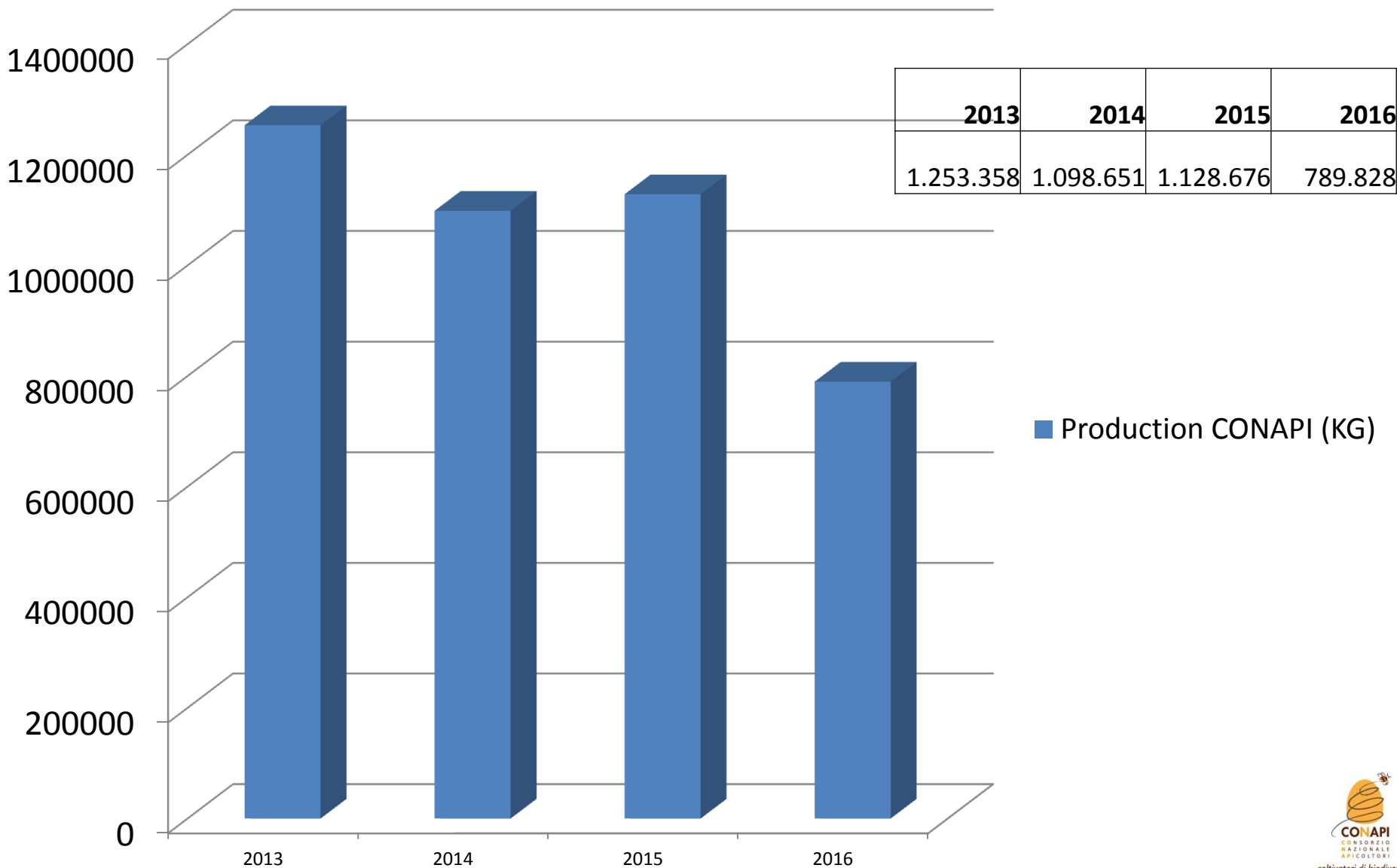
Samedi 29 octobre

DIEGO PAGANI, PRESIDENT CONAPI

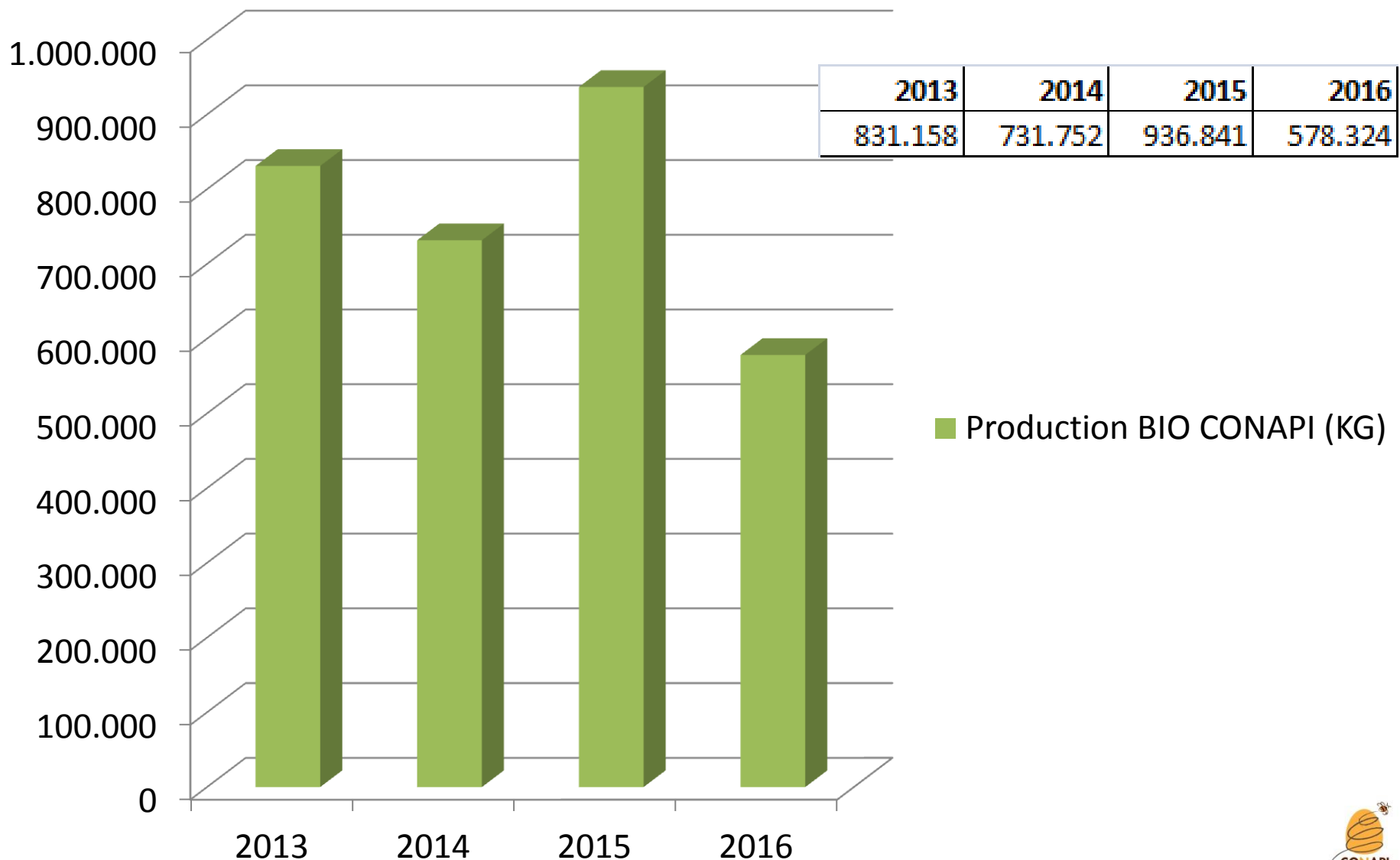


*cultivatori di biodiversità*

# Production CONAPI 2013 - 2016 (KG)



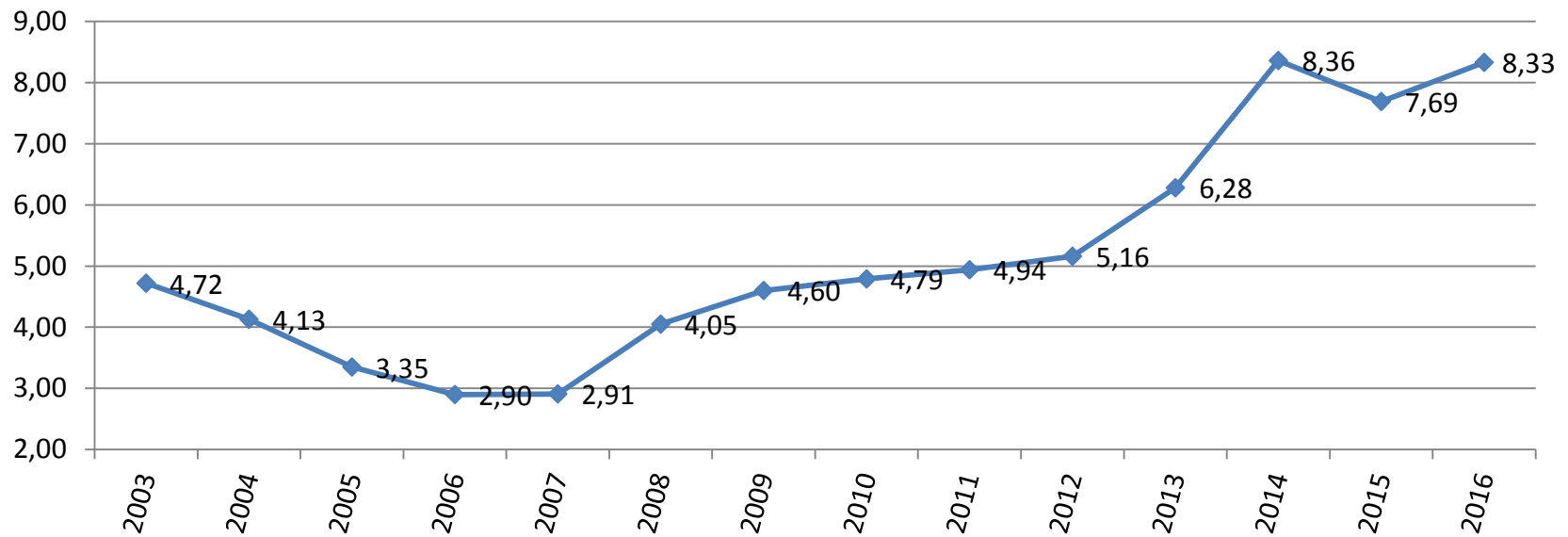
## Production BIO CONAPI 2013- 2016 (KG)



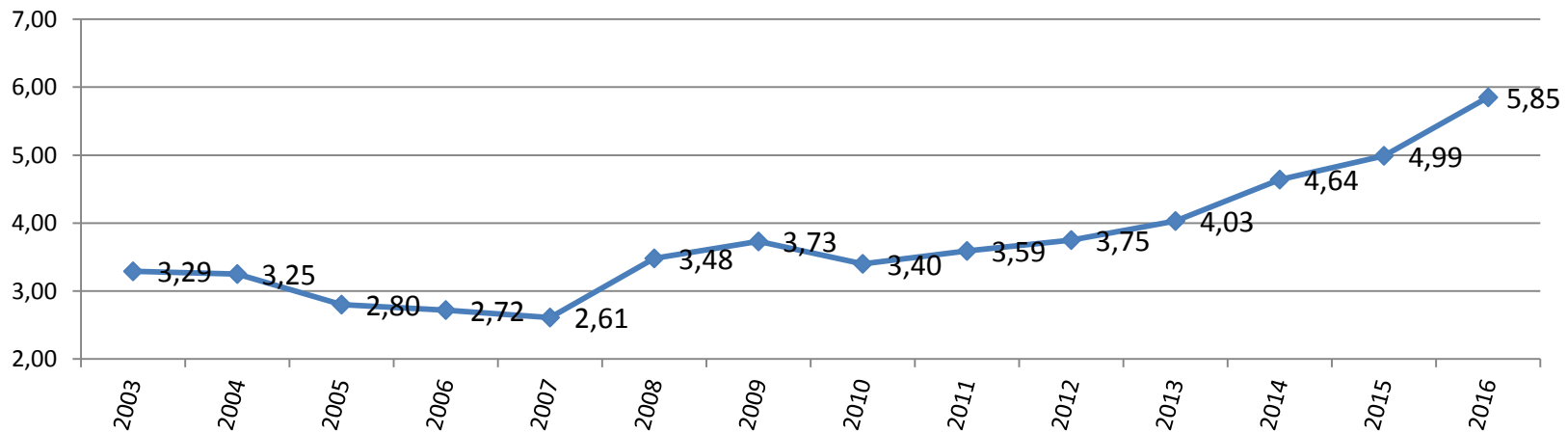
<b>REGION</b>	<b>Ruches</b>	<b>Tonn.</b>
ABRUZZO	42.651	977
BASILICATA	44.734	955
CALABRIA	57.449	1.171
CAMPANIA	48.208	890
EMILIA ROMAGNA	104.556	2.677
FRIULI VENEZIA GIULIA	27.609	534
LAZIO	95.636	1.853
LIGURIA	26.320	592
LOMBARDIA	136.799	2.349
MARCHE	37.629	816
MOLISE	8.500	110
PIEMONTE	113.325	2.622
PUGLIA	14.200	352
SARDEGNA	45.714	660
SICILIA	103.172	1.802
TOSCANA	87.449	1.760
TRENTINO ALTO ADIGE	61.973	1.198
UMBRIA	33.097	493
VALLE D'AOSTA	7.477	145
VENETO	60.698	928
<b>ITALIE TOTAL</b>	<b>1.157.196</b>	<b>22.833</b>

**DONNEES PRODUCTION TOTALE  
ET NUMERO RUCHES 2012  
(OSSERVATORIO NAZIONALE DEL  
MIELE)**

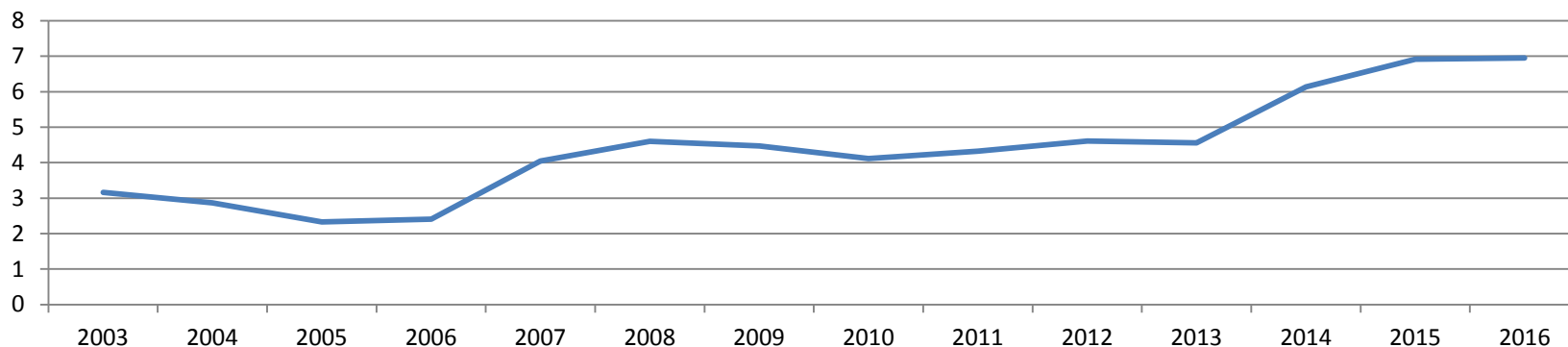
## ACACIA prix moy. Vente VRAC 2003-2016



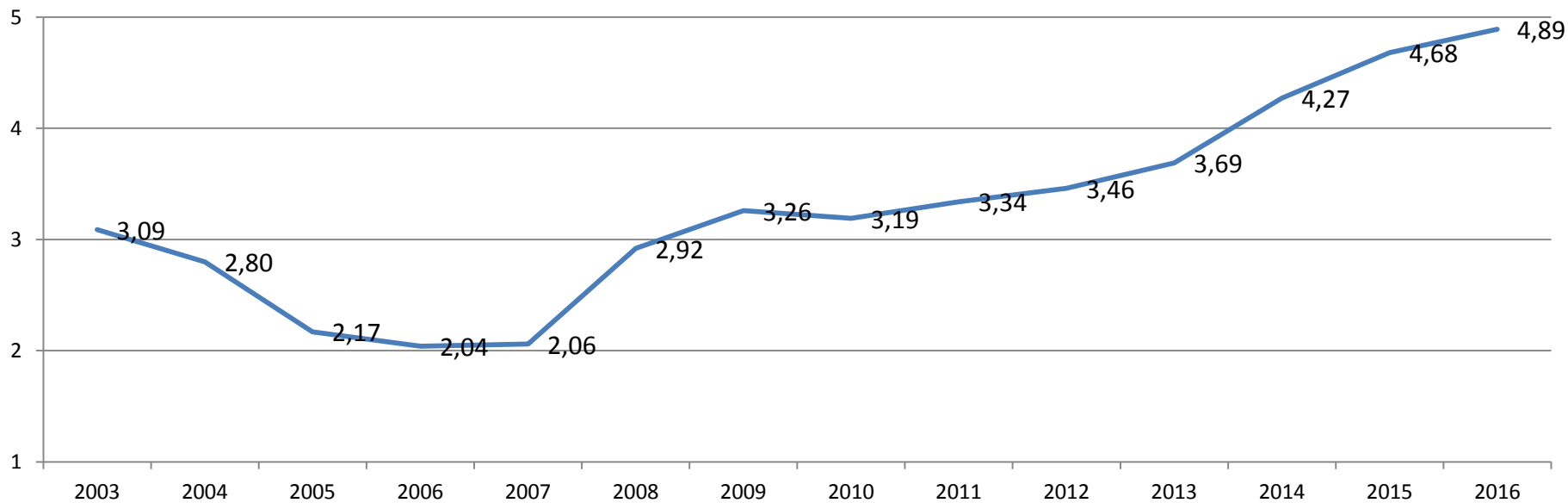
## ORANGER prix moy. Vente vrac 2003-2016



## CHATAIGNIER prix moy. Vente vrac 2003-2016



## MILLEFIORI prezzi medi annui 2003-2016



# RUCHES DECLAREES - KG PROD. - MOYENNE PRODUCTIVE / RUCHE APICULTEURS CONAPI BIO 2013-2016

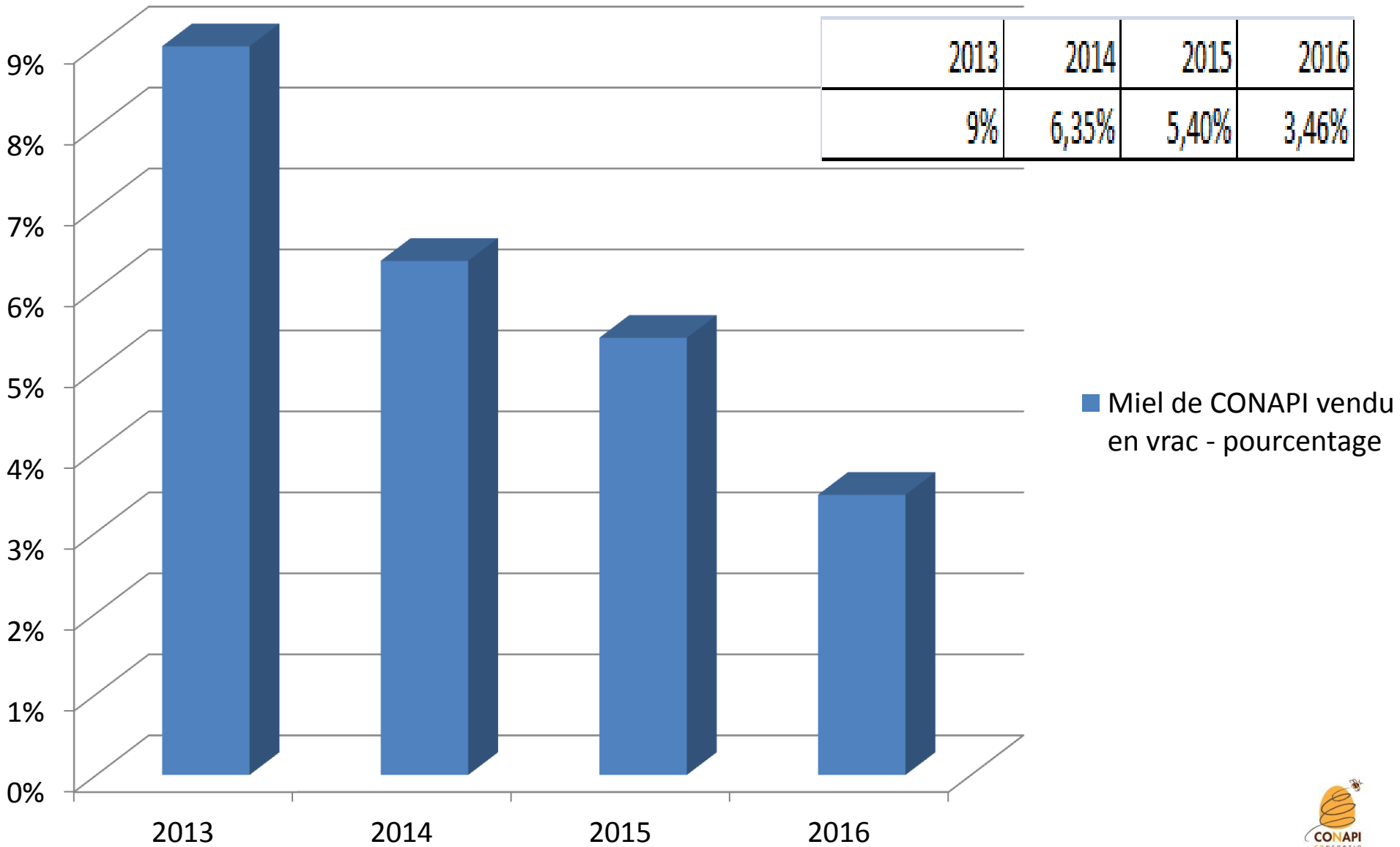
Description Miel	RUCHE S_DECL _PROD _2013	Kg Prod. 2013	MOYENN E PROD/RU CHE 2013 BIO	RUCHES _DECL_P ROD_20 14	Kg Prod. 2014	MOYENN E PROD/RU CHE 2014 BIO	RUCHES _DECL_ PROD_2 015	Kg Prod. 2015	MOYEN NE PROD/R UCHE 2015 BIO	RUCHES _DECL_ PROD_2 016	Kg Prod. 2016	MOYEN NE PROD/R UCHE 2016 BIO
MIEL ACACIA BIO	15.953	257.966	16	16.578	203.708	12	19.996	437.957	22	22.100	174.365	8
MIEL ORANGER BIO	1.660	35.950	22	2.452	41.450	17	2.212	54.700	25	3.055	41.285	14
MIEL CHATAIGNIER BIO	7.517	81.340	11	6.464	44.060	7	8.842	102.467	12	11.265	124.731	11
MIEL CORIANDRE BIO	330	18.650	57	438	15.550	36	720	21.175	29	1.048	19.710	19
MIEL EUCALYPTUS BIO	450	4.700	10	750	10.800	14	80	2.988	37	1.180	9.380	8
MIEL TOURNESOL BIO	1.401	26.000	19	1.351	19.650	15	944	14.719	16	1.405	10.960	8
MIEL TOUTES FLEURS C. BIO	5.960	106.125	18	5.231	79.524	15	4.392	45.330	10	5.963	36.427	6
MIEL TOUTES FLEURS M. BIO	6.950	144.454	21	9.068	146.388	16	7.555	88.308	12	5.179	48.926	9
MIEL TOUTES FLEURS OBS. BIO	2.179	34.516	16	2.750	36.258	13	2.418	20.661	9	2.140	11.790	6
MIEL FORET BIO	4.377	63.910	15	2.654	53.366	20	4.564	72.329	16	1.733	7.440	4
MIEL SAINFOIN BIO	839	15.544	19	834	16.075	19	892	8.623	10	1.925	25.268	13
MIEL TILLEUL BIO	2.081	25.210	12	3.283	46.810	14	4.193	59.061	14	3.954	46.379	12
MIEL TREFLE BIO	627	16.793	27	1.390	18.113	13	970	8.523	9	1.576	21.663	14
<b>TOTAL MIEL BIO</b>	<b>50.324</b>	<b>831.158</b>	<b>17</b>	<b>53.243</b>	<b>731.752</b>	<b>14</b>	<b>57.778</b>	<b>936.841</b>	<b>16</b>	<b>62.523</b>	<b>578.324</b>	<b>9</b>

## RUCHES DECLAREES - KG PROD. - MOYENNE PRODUCTIVE / RUCHE APICULTEURS CONAPI 2013-2016

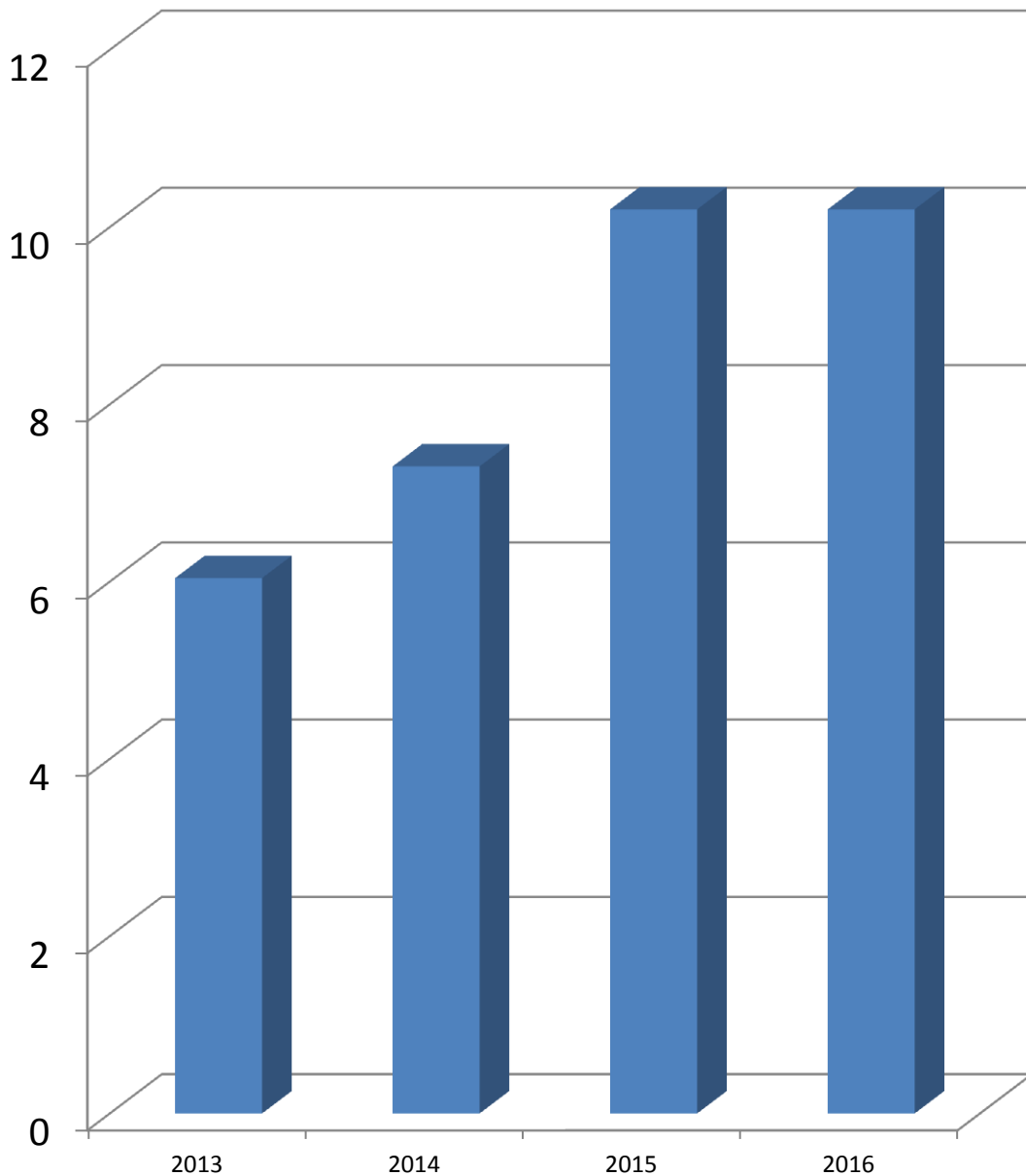
Description Miel	RUCHES_DE CL_PROD_2 013	Kg Prod. 2013	MOYEN NE PROD/R UCHE 2013	RUCHES _DECL_P ROD_20 14	Kg Prod. 2014	MOYE NNE PROD/ RUCHE 2014	RUCHES _DECL_ PROD_2 015	Kg Prod. 2015	MOYE NNE PROD /RUC HE 2015	RUCHES _DECL_ PROD_2 016	Kg Prod. 2016	MOYEN NE PROD/R UCHE 2016
MIEL ACACIA	10.788	153.190	14	11.252	92.980	8	13.055	266.620	20	15.714	90.339	6
MIEL ORANGER	8.195	294.146	36	7.521	144.882	19	8.719	174.706	20	8.894	150.326	17
MIEL CHATAIGNIER	8.356	91.787	11	4.343	35.327	8	5.953	93.097	16	7.287	62.925	9
MIEL CORIANDRE	468	11.400	24	1.666	41.039	25	650	18.906	29	2.277	65.572	29
MIEL EUCALYPTUS	4.886	24.988	5	4.499	97.835	22	4.905	78.447	16	2.322	27.270	12
MIEL TOURNESOL	3.601	119.400	33	3.248	87.580	27	3.093	85.383	28	3.901	79.100	20
MIEL TOUTES FLEURS C.	9.429	233.463	25	9.827	196.856	20	4.705	71.839	15	7.790	101.258	13
MIEL TOUTES FLEURS M.	8.612	206.193	24	6.319	186.865	30	8.996	183.777	20	5.274	85.176	16
MIEL TOUTES FLEURS OBS.	741	14.660	20	2.257	33.962	15	2.004	26.364	13	1.446	22.515	16
MIEL FORET	3.210	37.253	12	1.519	18.735	12	3.219	46.780	15	1.482	10.300	7
MIEL SAINFOIN	2.158	35.800	17	3.220	104.572	32	1.400	32.487	23	1.940	46.713	24
MIEL TILLEUL	1.820	27.278	15	2.711	57.518	21	2.454	47.270	19	2.803	46.434	17
MIEL TREFLE	200	3.800	19	40	500	13	320	3.000	9	220	1.900	9
<b>TOTAL MIEL</b>	<b>62.464</b>	<b>1.253.358</b>	<b>20</b>	<b>58.422</b>	<b>1.098.651</b>	<b>19</b>	<b>59.473</b>	<b>1.128.676</b>	<b>19</b>	<b>61.350</b>	<b>789.828</b>	<b>13</b>



## Miel de CONAPI vendu en vrac - pourcentage



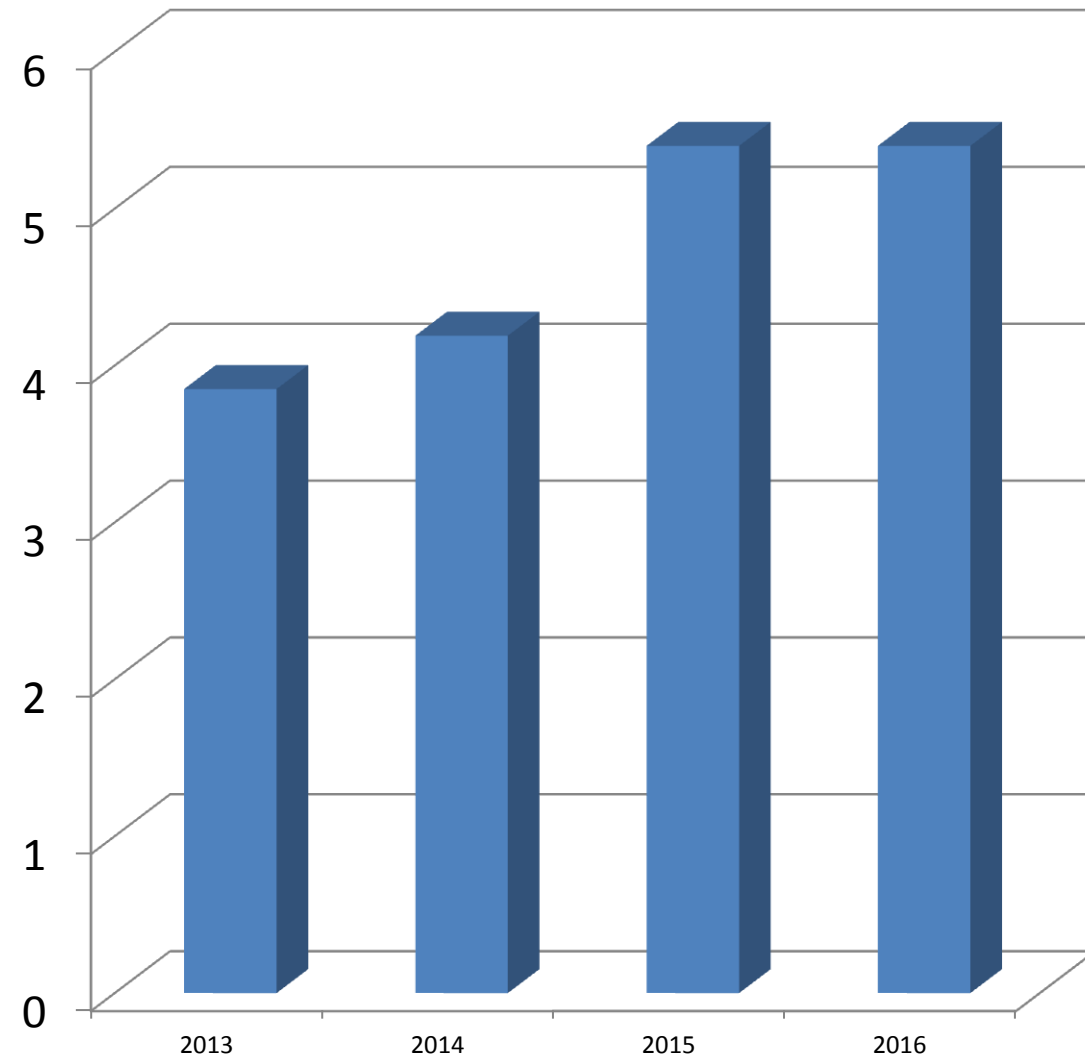
# Evolution de cour moyen de CONAPI du miel détail €



	2013	2014	2015	2016
	6,04	7,3	10,2	10,2

■ Evolution de cour moyen du miel détail €

# Evolution de cour moyen de CONAPI du miel vrac €



2013	2014	2015	2016
3,85	4,19	5,4	5,4

■ Evolution de cour moyen du miel vrac €

# Evolution situation marché miel en Italie (Source NIELSEN 2016): Iper + SUPER + Discount

Miel en general

Prix moyen miel en Italie + 5% (meme periode, deux ans)

	Quota Val.		Quota Vol.		Prezzo Medio		Distr. Num. Media		Distr. Pond. Media		Int.Idx AnyPromo Vol.		V.Vol. per Pto di Pond.		
	MAT 16	Var pti	MAT 16	Var pti	MAT 16	Var%	MAT 16	Var pti	MAT 16	Var pti	MAT 16	Var pti	MAT 16	Var%	
MIELE	100.0	0.0	100.0	0.0	10.02	5.1	99	0	100	0.0	18.9	1.0	89,734	-2.2	
PRIVATE	43.2	1.0	45.4	-1.3	9.52	10.6	88	1	97	0	21.4	1.1	42,016	-5.1	
CONAPI	2.5	0.2	2.0	0.2	12.51	3.6	15	4	29	4	18.4	6.5	6,145	-5.7	

# Evolution situation marché miel BIO en Italie (Source NIELSEN 2016): Iper + SUPER + Discount

Prix moyen miel BIO + 2,4%

	V. Valore		V. Volume		Prezzo Medio		Distr. Num. Media		Distr. Pond. Media		Int.Idx AnyPromo Vol.		V.Vol. per Pto di Pond.	
	MAT 16	Var%	MAT 16	Var%	MAT 16	Var%	MAT 16	Var. pti	MAT 16	Var. pti	MAT 16	Var. pti	MAT 16	Var%
BIO	14,543,863	16.7	1,038,046	14.0	14.01	2.4	70	5	93	2	19.6	6.7	11,190	11.1
PRIVATE	5,537,582	50.1	424,004	35.8	13.06	10.6	39	8	67	16	27.7	8.4	6,321	3.2
ALCE NERO	1,372,504	3.7	79,200	0.8	17.33	2.9	17	1	30	-2	7.5	2.2	2,647	7.0

# Evolution de prix au producteur (2013 – 2015)

Acacia bio

2013 → 2014 + 25%

2014 → 2015 =



Acacia

2013 → 2014 + 27%

2014 → 2015 =

Toutes Fleurs bio

2013 → 2014 + 13%

2014 → 2015 + 15%

Toutes Fleurs

2013 → 2014 + 11%

2014 → 2015 + 12%

Oranger bio

2013 → 2014 + 21%

2014 → 2015 + 7%

Oranger

2013 → 2014 + 18%

2014 → 2015 + 6%



Chataignier bio

2013 → 2014 + 30%

2014 → 2015 =

Chataignier

2013 → 2014 + 32%

2014 → 2015 =

